

DYNAPAC PIVOT ASPHALT ROLLER

DYNAPAC CG2300



Instead of central articulation, machines in the Dynapac CG roller range traditionally have steering on the drums. Dynapac Road Construction Equipment is presenting the Dynapac CG2300, as a supplement to its articulated CC machines. The Dynapac CG2300 is 3.99 m long, 2.99 m high, has an inner turning radius of only 2.65 m and an off-set as big as 1.2 m, making it easy to transport and manoeuvre in confined spaces.

COMPACT COMPACTION

DESIGNED WITH THE OPERATOR IN MIND

The cab on the Dynapac CG2300 was designed with the operator in mind. The interior offers the highest level of comfort and the drum edge visibility is excellent thanks to the extended sideways sliding seat and steering assembly. An Automatic Climate Control system is available as an option. Good ergonomics, plus smooth and precise steering are features provided by the advanced electronic mini steering wheel and four-piston steering system.

Optimized ergonomics is one way to achieve high quality compaction, ensuring that operators have continuous visibility of the operation and comfortable access to the controls. The CG2300 will feature 1 x 1 meter view and full visibility over all working functions including the drum surface/ sprinkler nozzles.

The clear control panel gives operators the information they need. All the gauges are displayed – water, fuel, voltage and number of hours – and the operator can change between menus at the touch of a button. Further information can be provided through the optional Dyn@Lyzer software, which gives the full documentation of temperature, compaction Evib value and number of passes on each section of the asphalt

QUIET RUNNING WITH GOOD FUEL ECONOMY

The Dynapac CG2300 is equipped with EcoMode as standard. This reduces fuel consumption by more than 15% and makes the already quiet CG roller even more silent. Noise is also kept down through the use of a hydraulic driven temperature-guided cooling fan, which only operates when necessary.

Use of a double pump vibration system eliminates the need for a vibration valve, making the system more efficient, aiding servicing and reducing fuel consumption. Both pumps – one for the front drum and one for the rear – can simply be shut off. The highly efficient excentric weights and the serial start up of vibration makes the system even more efficient keeping fuel consumption and CO emission as low as possible. The CG2300 has got automatically cut to idling speed after 10 seconds at full rpm in neutral.

In addition, the engine is Stage V/T4f ready and has very low emissions. Advanced options are also available, such as an edge presser/cutter (left and right) and a chip spreader.

A sprinkler system with double sprinkler bars and pumps, and a capacity of more than 700 liters of water, ensures uninterrupted operation.



COMPACT AND MANOEUVRABLE

Only 3.99 m long, 2.99 m high, an inner turning radius of 2.65 m and a large off-set of 1.2 m makes the CG2300 very easy to manoeuvre in confined spaces.

VISIBILITY

Visibility of 1x1 meters forwards and backwards makes the Dynapac CG2300 safe for people working around the machine and facilitates the driving for the roller operator.

Drum surfaces are visible thanks to the open frame and drum surface lights. This helps to maintain full control of the watering of the drums to avoid asphalt picking.

The large openable windows and the wide sliding function gives the operator full visibility of the drum edges.

CAB AND ERGONOMICS

The plus/minus 90 degrees rotation and slide-able operator module makes it possible for the operator to be placed for best visibility and ergonomics.

For optimum control the instrument panel, F&R handle and electronic mini steering wheel always follows the module.

Big openable side windows together with full slideability of the seat and steering module makes it easy for the operator to find a comfortable position with good visibility.

The noise level is very low in the ROPS/FOPS cab and Automatic Climate Control is available as an option.

SERVICEABILITY

Spring loaded scrapers keep adjustment time low and are easy to release and apply.

The lockable compartment for the rotating beacons keep them well protected against vandalism and theft.

All daily servicepoints are easy to reach also at night thanks to engine compartment light.

OPTIONS FOR ALL APPLICATIONS

An optional chipspreader is available for surface treatment on hot asphalt mix.

An optional edge presser for pressing of joint surface and outer asphalt edge is also available. Just changing the tool to a cutting disc and start cutting.



BENEFITS & FEATURES



OFF-SET DRUM

A maximum off-set of 1200 mm as standard

LOW EMISSIONS

EcoMode as standard keeps rpm, fuel consumption and noise on a very low level. More than 15% fuel consumption reduction. Stage V and T4 final ready engine.

SERVICEABILITY

Easy to reach service points and long intervals. Service "Pop ups" on the display

VISIBILITY

1 x 1 meter forwards and backwards. Good drum surface and sprinkler nozzle visibility. Full visibility of the drum edges

CAB

Low noise level ROPS/FOPS cab with optional automatic climate control system



Total length 3.99 m



COMPACT COMPACTION



Height: 2,99 m

EASY NIGHTWORK

LED main working lights,
drum edge lights and
drum surface lights as
standard

ERGONOMICS

Plus/ minus 90 degrees rotation and
slide-able operators module with mini
steering wheel, instrument panel and
F&R handle that follows the module

Introducing CG2300 with a new Stage V/T4f diesel engine installation & highly efficient power utilization

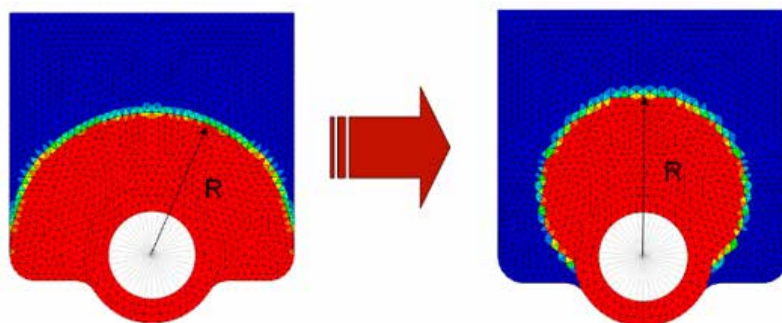
ECOMODE AS STANDARD

To make the CG2300 even more fuel efficient we have made ECO mode standard. With the ECO-mode system, it will be possible to come down 15% in fuel consumption. That means an essential amount of money saved on fuel. The ECO-mode will also make our already silent rollers even more silent as it keeps the engine rpm as low as possible.



EFFICIENT PATENTED ECCENTRIC WEIGHTS AS STANDARD

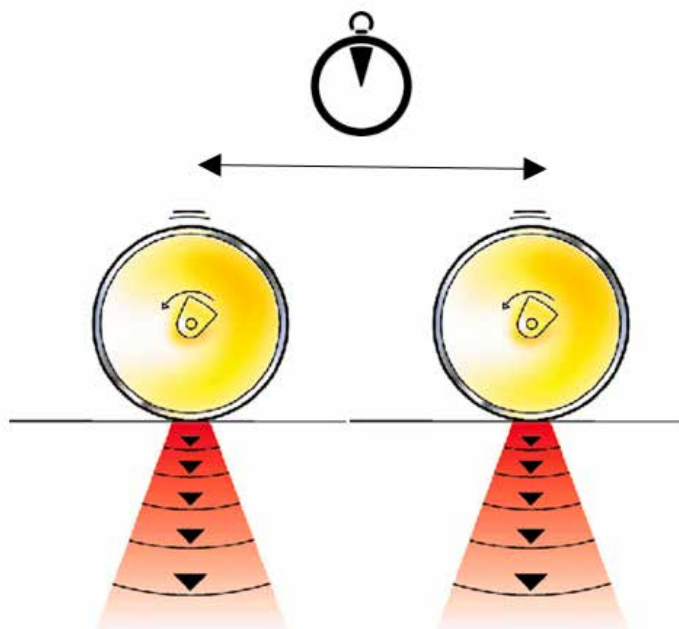
With our patented eccentric weights package designed for highest possible efficiency we gain as much as 50% lower power needed when starting up the eccentric weights. That is as much as 12 kW/ 16 hp less power needed. This in combination with our highly efficient two pump vibration system means much less need for a big diesel engine power and thereby lower fuel consumption.



Optimized eccentric weights take 50%/ 12 kW (16 hp) lower power to start up

SERIAL START-UP OF THE DRUM VIBRATION

On the CG2300 with Stage V/T4f installation we have programmed the vibration system to always make a small time difference between starting up the drum that goes first and the drum that goes last. This makes it possible to start up the drum vibration with very little drop in the diesel engine rpm making the roller very powerful with regards to the drive of the roller. It also makes the vibration reach the correct vibration frequency very fast.



A small time difference in start-up makes vibration reach correct frequency very fast

EASY NIGHTWORK

LED main working lights give a very white light that makes it possible to see if the mat is uneven and eventual marks also in the night.

Drum edge lights on all four drum forks gives visibility on all the drum edges and edge pressers/ cutters



Drum surface lights helps the roller operator to keep full control of the watering of the drums to avoid asphalt picking

Engine room lights facilitates service done in the night



Lights on the steps makes it safer and easier to enter and leave the machine

COMPACTION CONTROL WITH DYN@LYZER

DYNAPAC'S EXPERIENCE in Continuous Compaction Control (CCC) or Intelligent Compaction (IC) dates back to the late 70s. Since then we have been able to offer our customers the opportunity to control the compaction work in real time and to document the completed work for improved quality control.

DYN@LYZER for Asphalt

Compaction Documentation

Records and maps in real time:

- Evib compaction meter values
- Progress of Compaction Meter values, relative
- Temperature Meter values
- Number of passes
- Supports the roller operator to optimize compaction effort

Analysis of the compaction

- Evib compaction meter values (stiffness)
- Progress of Compaction Meter values (progress of stiffness)
- Temperature
- Number of passes
- Statistics and distribution
- Export PDF report and data text file

Facts about the DYN@LYZER

- Multiple machines can be factory prepared. This ensures a cost effective way to prepare a fleet of machines with the DYN@LYZER as they can share DYN@LYZER computer and GNSS equipment for use as required.
- User-friendly, modern user interface
- 11.6" full color touch screen
- Electronic keyboard for entry of data
- Mobile memory for permanent storage
- Several languages to choose from
- Runs on the roller's 24V battery or internal battery
- Tablet weight: 1.4 kg
- 220V adapter for office use
- Rugged tablet, resistant to dust, moisture and vibrations
- In Multi version, office software is included as well as machine-to-machine communication

TECHNICAL DATA

DYNAPAC CG2300

Drum width, mm 1500

MASSES

Operating mass, kg (incl. ROPS) 8,300

Module mass, kg (front/rear) 4,150/4,150

TRACTION

Speed range 0-12

Vertical oscillation $\pm 6^\circ$

Theor. gradeability 41

COMPACTION

Centrifugal force, kN (high/low amplitude) 80/60

Nominal amplitude, mm (high/low) 0.6/ 0.3

Static linear load kg/cm (front/rear) 27.7/27.7

Vibration frequency, Hz (high/low amplitude) 45/55

Water tank, l 770

ENGINE

Manufacturer/Model Deutz TD 3.6 Stage V/T4f

Type Water cooled turbo Diesel

Rated power, SAE J1995 55 kW (74 hp)@ 2,200 rpm

Fuel tank capacity, l 105



STANDARD FEATURES FOR CAB

Integrated ROPS/FOPS

Operator's station, sliding and rotating

Seat belt 3" with buzzer

Heating system

Frequency meter/ impactometer

Multi speed fan system with filter

Floor mat

Panel covers, interior

Inner roof noise absorbing

Internal rear view mirror

Interior light

Charger socket: One 24 and one 12 Volts

Steering wheel, mini in armrest

Storage: Rear cover and side panel

Cup and can holder

Tinted safety glass

Openable sidewindows

Wipers and washers front and rear

Rear view mirrors, traffic view

Water level display

Speedometer display

Hour meter display

Engine temperature display

Fuel level display

Hydraulic fluid temperature display

I/O-list in machine display

Tachometer display

Voltage meter display

Warning light, air cleaner

Warning light, clogged hydraulic fluid filter

Warning light, engine oil pressure

Warning light, engine oil temperature

Warning light, hydraulic fluid temperature

Warning light, low charge

Warning light, low fuel level

Drive control, electronic (EDC)

Speed limiter

OPTIONAL FEATURES FOR CAB

Comfort cab incl:

ACC (Automatic Climate Control)

Radio with blue tooth connection

Operators seat, luxury

OTHER STANDARD FEATURES

Amplitudes, dual. French V1 class

Automatic Water Control (AWC)

Automatic Vibration Control (AVC)

Back up alarm

Bio fuel ready B20

Brake release

CE-mark

ECO-mode

Flow divider

Lifting points

Lights, working LED

Offset drums

Rear view mirrors, process view

Rotating beacon

Spring loaded scrapers

Split drums

Sprinkler, full flow button

Sprinkler system pressurized with 3-stage filtering and

back up system with dual sprinkler bars

Sprinkler timer

Stage IIIB/Tier4 diesel engine

Tie down points

Tool box

Vibration quick stop

Vibration shut off, front or rear drum

OTHERS OPTIONAL FEATURES

Asphalt temperature meter

Biodegradeable hydraulic fluid

Chip spreader

Chip spreader, preparation

Dynapac Compaction Analyzer

Edge press, right side

Edge press, left side

Fire extinguisher

First aid kit

Joint cutter disc, 150 mm (5.9 inch) cutting depth

Joint cutter disc, 80 mm (3.1 inch) cutting depth

Lights, direction, side mounted

Lights, driving for chip spreader

Lights, driving, right hand traffic

Lights, licence plate

Service Kit 50/500/1000 hours

Slow Moving Vehicle sign

Special colour, one or two colours

Tachograph

Tool set

Water tank cover, lockable

We reserve the right to change specifications without notice. Photos and illustrations do not always show standard versions of machines.
The above information is a general description only, all informations are supplied without liability.

Your Partner on the Road Ahead